



**FUJIFILM**

Life Care **Made Easy**

Y A S A S I I <sup>®</sup>  
*simple . easy*

# Ensuring



# efficiency

Yasasii® is a comprehensive Healthcare Information System designed for all types of healthcare facilities ranging from a small clinic to a network of tertiary care hospitals. With its simple and user friendly interface coupled with Decision Support System and Knowledge Management System, Yasasii® simplifies the work of healthcare providers, improves the workflow and reduces medical errors. Thereby, saves lives, enhances quality of life and reduces cost. Yasasii® is also Meaningful Use 1 and Meaningful Use 2 Certified by CCHIT in USA.

Yasasii® has HIMSS Stage 7 maturity and has medical facilities which are HIMSS Stage 6 certified.

Yasasii® ensures consistent and streamlined functioning of all the departments to mitigate revenue loss for the organization. It synchronises the clinical, financial and administrative processes to ensure operational efficiency.

# Enhancing

## Vision

A breakthrough patient centric healthcare information system, that will enable the Governors/Regulators, Managers and End-Users to visualize reliable information to make timely decisions with optimal resources.

# care

Kameda Infologics is a provider of integrated IT solutions to the healthcare industry. For several decades Kameda Infologics has strived to develop world-class software products specializing in Healthcare, with it's R&D headquarters in Japan & India with branches in UAE, KSA, USA, Malaysia and UK. Infologics partnered with Dr. Toshitada Kameda, founder of Kameda Healthcare Informatics Corporation (KHI) which is a pioneer in the development of paperless solutions and is currently rendering its services to more than 250 hospital sites in Japan.

It was Dr. Kameda's vision which made Kameda Medical Centre, a 1000 bedded super specialty hospital, south of Tokyo, into a paperless and filmless facility since 1994.

## Mission

To save lives, improve quality of life and reduce cost through effective use of information technology.





15

ADT (Admission  
Discharge Transfer)

Laboratory  
Information System

16

17

RIS / PACS

Mobile Apps

18

19

Patient Portal

Document  
Management System

20

21

Dietary Management

22

Device Interfacing

Risk & Quality  
Management System

23

24

Nursing Management  
System

Blood Bank Management  
System

25

26

Disease Surveillance

CSSD

27

28

Business Intelligence





**FUJIFILM**



## Transforming documentation

EMR is designed as a powerful, flexible and easy-to-use clinical information system

HIMSS Analytics **STAGE 7**

### Electronic Medical Records

Keeping detailed patient medical records for continuing patient care is of utmost importance in any healthcare organization. EMR can transform your paper-based clinical processes into a 24 x 7 immediate-access paperless system.

#### Key Features

- Specialty & sub-specialty based documentation.
- Simple & easy documentation using smart templates, smart notes, and voice to text features.
- Improved visualization for better decision making.
- Quick data retrieval and search capability.

#### Key Benefits

- Saves valuable space and resources by eliminating medical records room. The personnel can be redeployed to other areas to enhance patient service and quality.
- Eliminates manual data gathering, reduces staff workload and increases physician satisfaction.
- Facilitates physician mobility without compromising data accessibility or security.
- Saves time by instant access of medical records.
- Reduces redundancies in data gathering.
- Reduces medical errors.



## Computerised Physician Order Entry

The CPOE module allows orders to be entered and electronically transmitted from the point of origin to the point of patient-services, thus minimizing delays, medical errors, and making Information accessible to other providers.

### Key Features

- Immediate transfer of orders to lab, radiology department & pharmacy without any human intervention.
- Increased legibility, accuracy, and completeness of clinical prescriptions.
- Knowledge driven care and decision support.
- Order sets - lets you order a pre-defined set of therapeutic medications.
- Order reconciliation.

### Key Benefits

- Reduces waiting time and increases patient safety.
- Eliminates the possibility of litigation expenses, arising from medication errors for hospital.
- Reduces variance in clinical care with use of consistent terminology.
- Increased compliance to treatment protocols and clinical pathways.

CPOE fundamentally improves and streamlines the ordering processes thereby, saving time and improving patient safety

## Streamlining Processes





**FUJIFILM**

**Kameda Infologics**  
PVT. LTD.



**E-prescription improves the delivery, accuracy and legibility of clinical prescriptions**

## Expediting Delivery

### E-Prescription

E-Prescription is a form of Computerised Physician Order Entry wherein, the doctor prescribes through a computer over a secured network eliminating the need for a handwritten prescription.

### Key Features

- Uses a private, secure, and closed network called Surescripts®.
- Ensures clear and unambiguous transfer of instructions to the pharmacist.
- Cross checks for allergies, by drug-to-drug interactions and alerts accordingly.
- Automatic dosage calculation and medicine reconciliation.

### Key Benefits

- Saves time and improves the operational efficiency of the pharmacy.
- Significantly reduces medication errors, medication allergy errors and prescription errors.
- Reduces waiting time.

## Front Office Suite

Front Office Suite facilitates patient registration, appointment scheduling, consultation and biometric identification. The system allows patients to request appointments with physicians and captures relevant demographic data. It helps staff in issuing patient ID cards and generates a unique patient medical record number for easy identification.

### Key Features

- Multi-location registration.
- Built-in insurance and corporate management system.
- Barcode and smart card facility.
- Touch screen kiosk.
- SMS/e-mail reminders, Unique Queuing Systems - No waiting model, Integrated point of care billing.

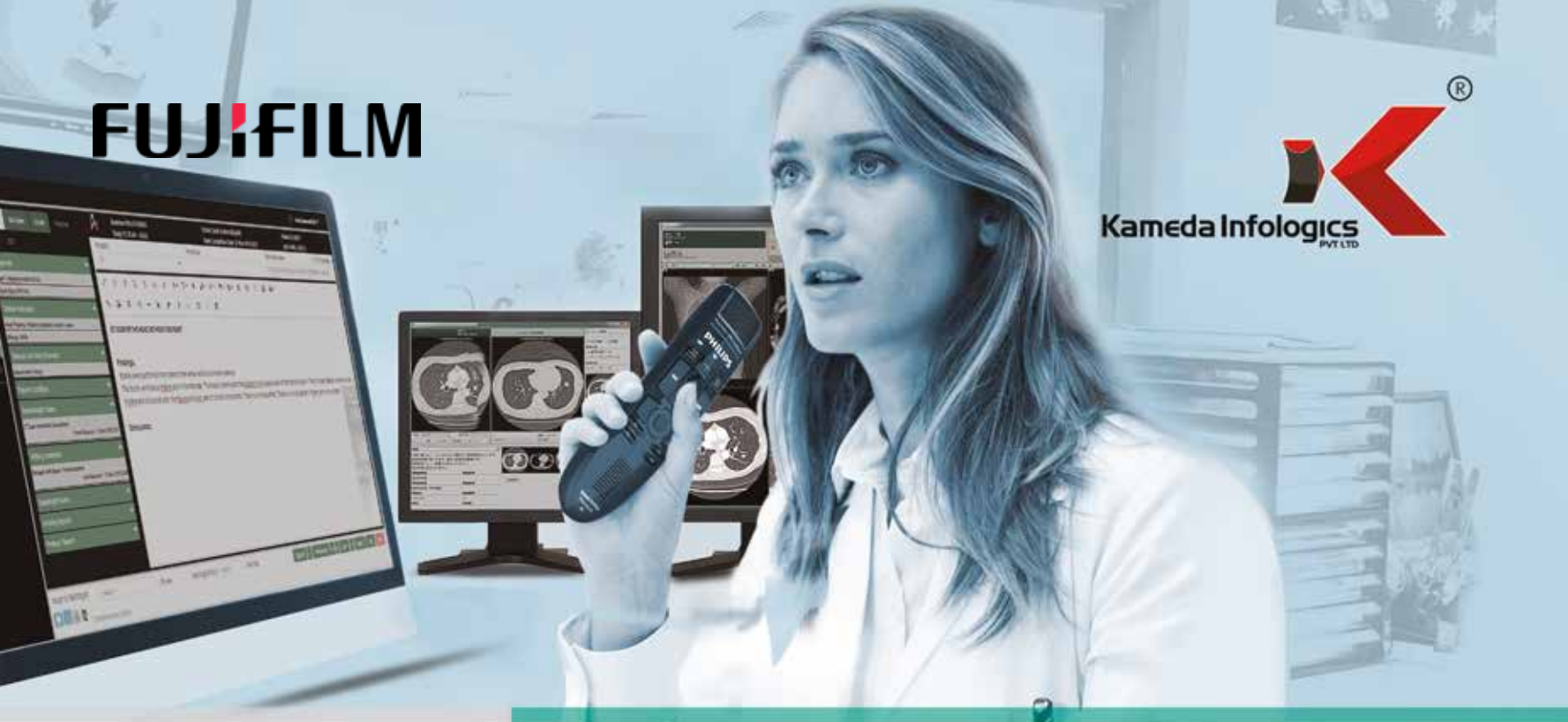
### Key Benefits

- Increased compliance to appointments and lower incidence of no-shows.
- Hassle-free registration and appointments.
- Decreased waiting time for patients and hence, increased patient satisfaction.

Say hello to a more  
patient-friendly  
front office

## Facilitating appointments





## RIS/PACS/Tele-Radiology

Ease of access through handhelds and smartphones

Synapse PACS employs wide range of scalable solutions towards Radiology, Cardiology, Nuclear Medicine, Echo - Cardiology, Orthopaedics etc. The solutions not only aid the agile access to scans, reports etc. But also streamlines the allied activities ranging from appointment scheduling to audit trails. We limit the wastes by making a healthcare facility filmless.

### Key Features

- FDA Approved, DICOM, HIPAA & HL7 VNA Compliant.
- Digital signature for reports, Online session control.
- Enforces security measures through world class protocols such as AES, Md5 checksum.
- SSL, PGP, Multilevel reporting with search capabilities, Voice recognition & dictation integration.

### Key Benefits

- Progressive transmission allows Radiologist to view images at any bandwidth.
- Browser based access yields to 24/7 availability.
- SMS, Email & Fax alerts incorporated for a better followup.
- Global worklist for dynamic management & decision making advocates mobility by ease of access through handhelds and Smartphones.



## Centralized Laboratory Information System

This system caters to the requirement of clinical biochemistry, clinical pathology, microbiology, immunology etc., and streamlines all the process at the lab, right from sample collection to result entry and transfer.

### Key Features

- HL7 Standards incorporates the ability to receive data from other lab machines.
- Sample management system creates barcodes.
- The system captures results automatically and updates patient records.
- Instantaneous receipt of doctor's orders by the lab technician.

### Key Benefits

- All the lab results will be submitted directly to the doctor.
- No delay in the execution of Doctor's orders due to improved communication.
- Improves quality; minimize errors.
- QA & QI system for Laboratory Equipment.

CLIS automates the processing requirements of clinical laboratories in multi-speciality hospitals

## Generating solutions





**Streamlines processes  
and procedures in an  
operation theatre**

## Delivering Precision

### Operation Theatre Management

All the major activities surrounding operation theatre are tracked and monitored - ranging from operation theatre scheduling to the transfer of patients, to the respective wards after surgery.

### Key Features

- Schedules the allocation of operation theatres and operating teams systematically.
- Integrated OT billing at the point of care.
- The module connects the OT to blood bank, pharmacy, consumables and investigation centres.

### Key Benefits

- Efficient electronic scheduling reduces the waiting time of both patients and surgery teams.
- Spot billing at OT eliminates erroneous mapping of consumables to different patients.

## Infection Control System

Infection control system is a data mining tool that is on constant vigilance against outbreak of hospital acquired infections and indiscriminate antibiotic usage. The data from critical departments are processed, analysed and meaningful reports are generated that helps to identify and pinpoint the source of infection, whether it is iatrogenic or hospital acquired. This system is indispensable for healthcare institutions which are aiming for accreditations.

### Key Features

- Data is sourced automatically and analysed without human intervention.
- Alerts the hospital authorities if an outbreak is suspected.
- Tracks patient's journey and significantly reduces super bugs (MRSA).
- Monitors the usage of antibiotics.

### Key Benefits

- The hospital can formulate its antibiotic policy by analysing the antibiograms.
- Helps in further research and analysis of the outbreak.
- Reduces and prevents antibiotic abuse.
- Increases antibiotic sensitivity and reduces antibiotic resistance.

A novel package that tracks all Hospital Acquired Infections

## Disease Surveillance & Infection Control System



**Admission Management,  
Discharge & transfer will  
be radically transformed**

## Redefining Procedures

### Admission, Discharge and Transfer

This module forms the core of the in-patient treatment and monitoring functions. It tracks the movement of the patient when he/she is admitted in a ward, shifted to another ward and discharged from the hospital.

### Key Features

- Helps in ward management like allotment of rooms, room transfer, room holding and room status maintenance.
- Facilitates advance bed / room reservations and tracks patient's movement across rooms.

### Key Benefits

- The patients would be admitted only to rooms that are completely fit for occupation.
- Unambiguous admission and allocation of rooms.
- House-keeping staff can easily locate a vacated ward / room and make it ready for the next patient.



## Pharmacy and Supply Chain Management

Pharmacy and Supply Chain Management is a fully integrated module covering the main and sub functions of pharmacies as well as stores. The central store, including the peripheral stores can be monitored and the inventory stock managed according to the demand.

### Key Features

- Records the drug details, storage information, quantity in hand and reorder quantity.
- The module records sales to patients, generates credit invoices, creates bills for cash sales and links up with nursing information system for in-patient needs.
- Transfers to other sub-stores are also recorded by this module.

### Key Benefits

- The patient can know right at the time of prescription whether the drug is available in the pharmacy.
- Real time alerts generated for goods with low stock levels.
- Hospital can fully plug leakages of drugs and inventory at every point of sale.
- Helps organisations reduce inventory and develop lean, just-in-time supply chain system.

Keeping stock of drugs  
will now become a  
hassle free process

## Minimising losses



## Clinical Transformation

### Ensuring Optimal Adoption

Clinical transformation is imperative to a successful YASASII implementation as the processes blends with people, disciplined process, robust technology, seamlessly yielding a measurable improvement.

#### Key Features

- CMIO and their team leads the clinical transformation process during implementation.
- Clinical informatics committee is an empowered committee that works in conjunction with the management, end users to facilitate clinical transformation and change management, CIC also reviews and approves the end users change requests.
- On the solution front, competency in the use of various modules pertaining to the clinical information system is ensured.

#### Key Benefits

- Increased adoption leading to a successful implementation.
- The whole process is well monitored ensuring optimal use of the clinical information system to enable a better, safer and more efficient care.

## Convert Information into Insights

A highly modular, scalable, flexible and interoperable platform for healthcare BI and analytics that enables executives to visualise information with transparency. Yasasii & BI module accentuates equally on the critical clinical and non clinical KPI's to generate reports that can be exported to universally accepted platforms. The degree of expanse comprehensively ranges from business analytics to statistical analytics for an effective TAT management.

### Key Features

- Real time, intuitive dashboard that are designed for executives, using robust and flexible algorithms.
- Integrated, data set driven intelligence.
- Enterprise and Regulatory reporting can be extracted.
- Interoperability facilitating secure health information exchange.

### Key Benefits

- Empowering all the stakeholders by timely and effective decision making.
- Better forecasting and revival of best practices.
- Substantiating accountable care.
- Enhanced reporting to international quality standards.
- Clinical data analytics that are mined from various points, are instrumental in eradicating any loose ends.
- Analytics are invaluable for research and trend analysis.

Informed & logical  
decision making

## Business Intelligence





### Insurance Management

The Insurance Management module handles all the activities that are related to the insurance provider. Multiple options are provided to accommodate all types of insurance packages.

### Finance and Billing Management

Yasasii Finance and Billing module has the ability to integrate with any HL7 compatible third party system. General Ledger, accounts receivable, accounts payable and asset management are some of the features available in this module. Also, all cash and credit transactions are billed using this module. Billing system brings out all the services billed into a common billing format. The module keeps track of all bills generated and manages the cancellation of authorised bills.

### Business Intelligence / MIS Reports

Extensive Management Information System (MIS) reports can be generated instantaneously for all the activities of the hospital. Reports on various activities across weeks, months or quarters can be created.

## Revenue Cycle Management

Powerful and Flexible RCM system to accommodate for Insurance, TPA's, Cash, Credit, Corporate, etc. billing work flows are localized to various geographies from USA, Middle East to Japan.



FUJIFILM



ORACLE®



odoo

## ERP

Yasasii is compliant to several standards and integrated to a full-fledged ERP solution to facilitate & manage businesses in a healthcare setting by tracking business resources and processes in real-time. The ERP solution helps manage procurement, fixed assets management, human resource and payroll, thereby driving every aspect of the business from monitoring, reducing pilferage and providing detailed business reporting.

### Key Features

- ERP is specially customized for healthcare enterprises.
- Incorporates best practices in functioning of the organization.
- Secure access to company records and exhaustive audit trail functionality to track all changes in ERP.
- Regional customization to fulfill local regulatory requirements.

### Key Benefits

- Integrated business processes, one central database with no duplicating of data.
- Easy to use, powerful reporting across the whole suite and therefore the whole organization. The same look and feel across the whole system, making training and using the ERP very straight forward.

Advance and Integrated system for complete management of the Blood Bank based on International Standards - AABB, ISBT, CAP, QR Code, etc.

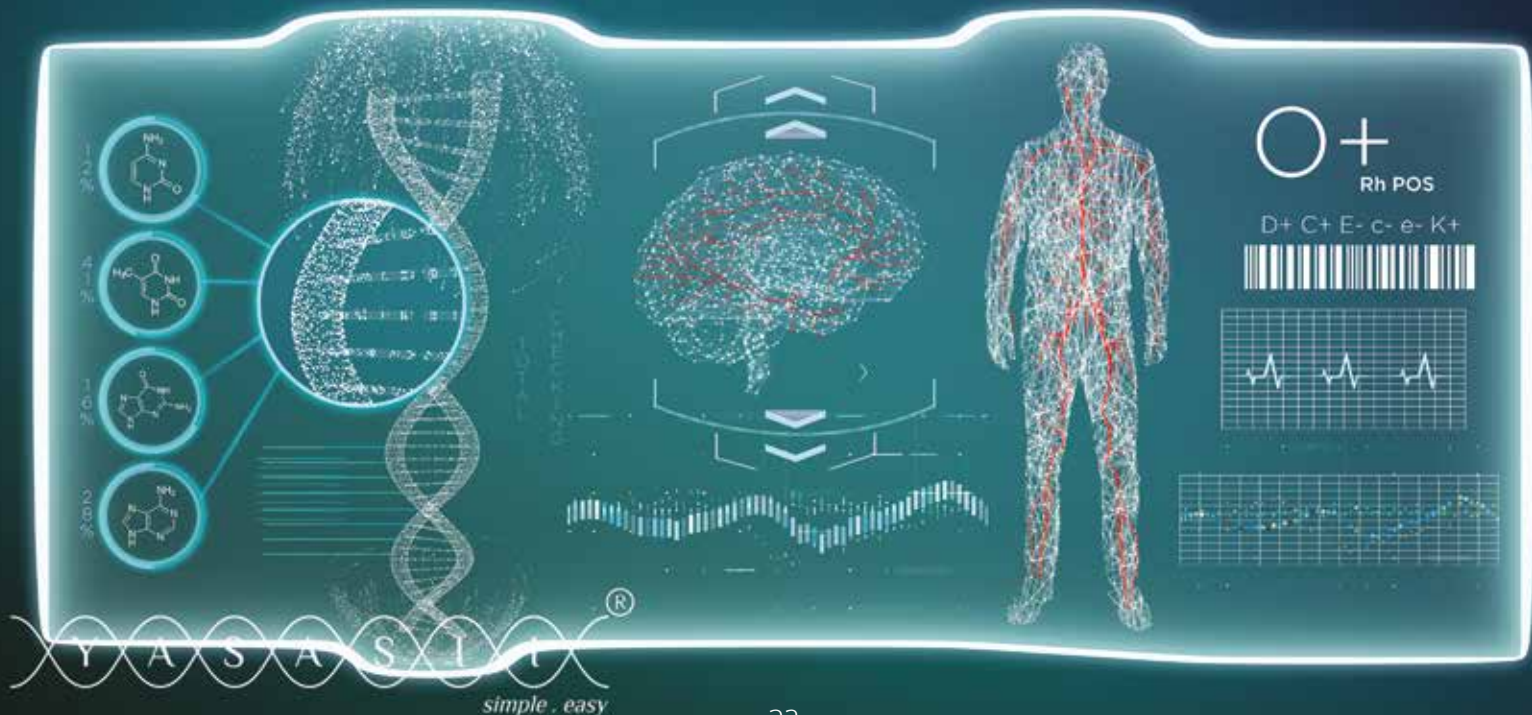
Lean and Comprehensive : From a Hospital blood bank system to a standalone Blood Bank to a National Blood Bank Management System. Single Solution, Integrated with HIS, EMR, Nursing Management, Lab, OVR, Billing systems, etc.

Powerful Configurable workflows from Donor to Recipient with tracking and reporting of Adverse Reactions. Collection planning, Donor relationship management, Referral, Interview, Product processing, Product allocation and Delivery.

### Key Features

- Safety
- Reliability
- Flexibility
- Traceability
- Mobility
- Hemovigilance
- Integrated

## Blood Bank Management System (BBIS)





**FUJIFILM**

**Kameda Infologics**  
PVT LTD



## Extending Support

Kameda Infologics® is in the forefront of providing the best support for its products and services. Over a decade, it has been giving smart, round-the-clock support to its clients across the globe. KI has a comprehensive multi-tiered portfolio of support.

### **Hands-on Training**

KI provides hands-on training to the key personnel who use the product. It conducts various training sessions to help users make the best use of Yasasii®. It also supplies an operational guide, which will help users derive maximum benefits from using KI products and services.

### **Software Updates & Patches**

KI is working towards continuous improvement of its products and services. It provides essential software updates and patches, free of cost to its clients.

### **Online Support & On-Site Support**

KI provides initial front line support over email, telephone and chat. Support team accentuates upon the identified issue and tries to solve it in the least possible time frame. Our response time exceeds industry benchmarks. KI designates an engineer for onsite support, if required, to solve any critical issues which are decided on case to case basis, upon request from the client.



# Based On Standards





### **Dr. Toshitada Kameda**

Chairman, Kameda Infologics Pvt. Ltd.

Dr. Kameda is an eleventh generation doctor. He is the Honorary Chairman of the Board, Kameda Medical Center (A 350 year old hospital and now a 1000 bedded healthcare facility south of Tokyo, has been paperless and filmless since 1994). He is also the Chairman of Kameda Healthcare Informatics Corporation and President of Kameda Health Informatics Institute Inc.



### **Dr. Ataat Khan**

Managing Director, Kameda Infologics Pvt. Ltd.

Professionally an emergency physician with international experience. A young dynamic serial entrepreneur. The visionary and force behind YASASII®. Holds Master Degree in Business Management from Frankfurt School of Finance and Management, Germany.

## **A pioneering team of experts**



### **Mr. Satoshi Tsukada**

Technical Advisor, Kameda Infologics Pvt. Ltd.

A pioneer of hospital information systems with almost two decades experience in healthcare information technology. He is the President of Apilus Co. Ltd., and a member of the Board, Kameda Health informatics Institute Inc.

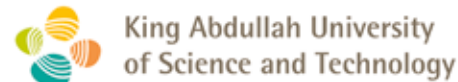


### **Mr. Tarun Anand**

Director of Technology, Kameda Infologics Pvt. Ltd.

A technologist, passionate and well-known for product development, Mr. Tarun was awarded Worldwide Software Architect of the year 2003 by Microsoft. He worked for over 10 years at Microsoft and is credited for architecting .NET, Windows NT & 2000 DCOM & COM+. He has been awarded many approved patents. He holds MS from UT, Austin, USA and B.Tech from IIT Kanpur, India.

# Some of our Clients





YASASILI<sup>®</sup>  
simple . easy



[www.kamedainfologics.com](http://www.kamedainfologics.com)  
[contact@kamedainfologics.com](mailto:contact@kamedainfologics.com)

**FUJIFILM**

## Global Presence

**Japan** : Crystal City, East Building 7th Floor, Kojimachi 4-8 Kojimachi Chiyoda - ku Tokyo  
Tel : +81 332636824 | Fax : +81 33263690

**India** : Amstor House | Technopark | Kerala | (INDIA) | Tel: +91 471 3048170-78,  
Fax:+91 471 3048179 | Email: [contact@kamedainfologics.com](mailto:contact@kamedainfologics.com)  
C-47 HSSC South Extension Part 1, New Delhi 110049 Ph: +911141666661

**KSA** : Kameda Arabia | Beside Japanese Consulate | Al Ikhlas Street | Off Palestine Street  
Al Hamra District | Jeddah| (K.S.A) Tel: +966 126641114 | Fax: +966 126658901  
Email: [info@kamedaarabia.com](mailto:info@kamedaarabia.com)

**USA** : 44901 Falcon Place | Suite 116| Sterling|VA 20166| (USA) | Tel: +1 800 694 1203

**UAE** : CPO HFZ Leased Office Building | Office No - 11 | Hamriyah Free Zone, Sharjah | UAE

**Malaysia** : 22, Jalan Jurunilai U1/20 | Seksyen U1 | Hicom-Glenmarie Industrial Park | 40150  
Shah Alam | Selangor (Malaysia)